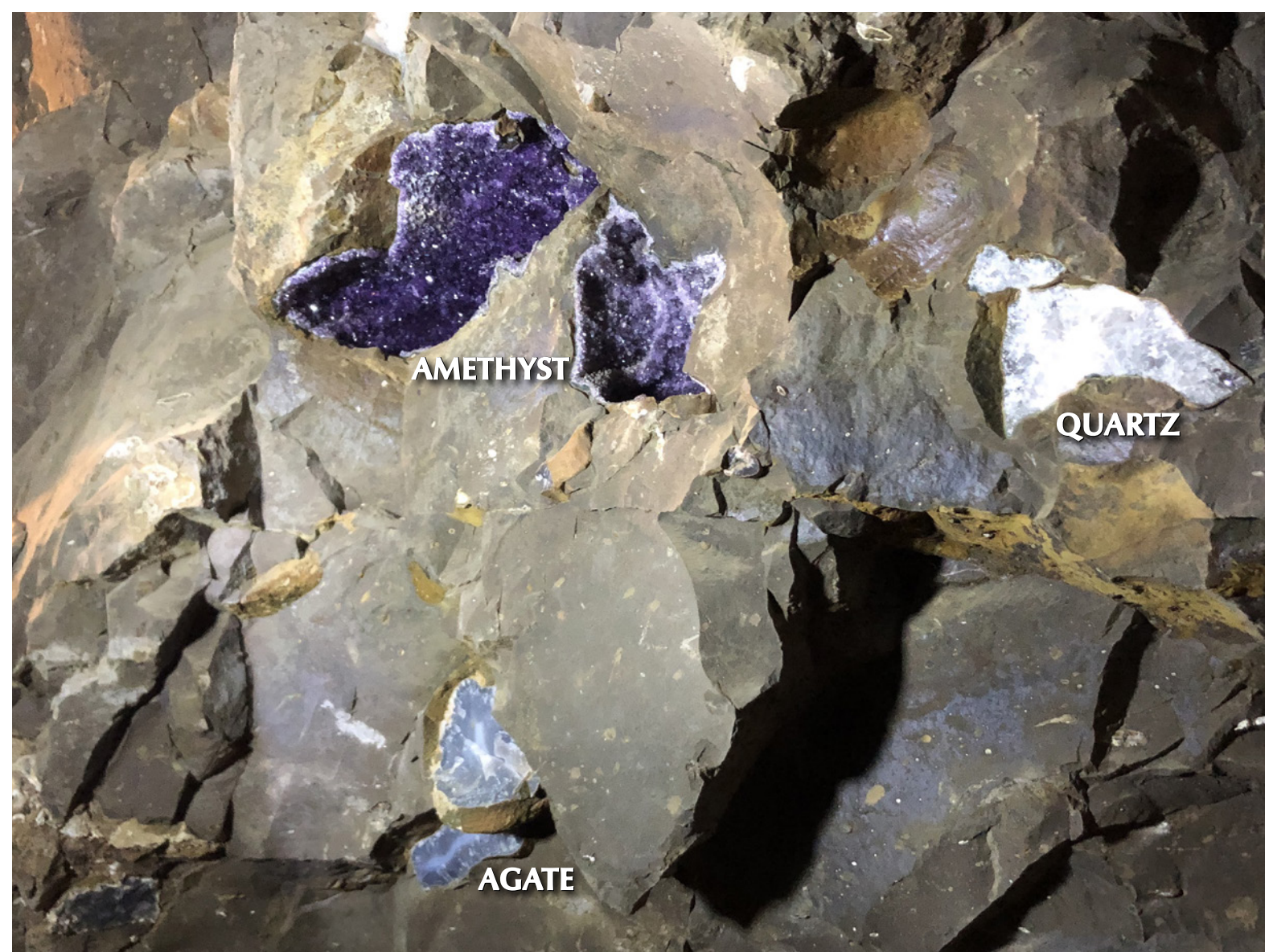




*Carol Tresor*

NATURAL TREASURES IV



# INTRODUCTION

We are pleased to present a high quality collection of Uruguayan crystals. All the pieces in this catalogue were legally and ethically sourced directly from the prestigious mines of Uruguay, South America. Uruguayan amethyst is internationally recognised as being the finest and most aesthetic amethyst in the world, due to its intense deep purple colouration, the large size of its peaked crystals, and its durability. These crystals were formed over 120-140 million years during the Cretaceous period, and as all of our pieces are formed naturally, they are completely unique and unrepeatable natural wonders.

Amethyst crystals are found inside vugs (hollow cavities) or geodes (rounded or spheroidal-shaped vugs) in volcanic areas or sedimentary rocks. In some cases, mineral-laden water filters through these hollow voids over millions of years, creating a crystal lining.

Geodes containing amethyst are often formed in Basalt (volcanic rock) and can be found in Uruguay and Brazil. The enchantment of finding a geode is discovering the hidden crystals that have formed inside over millions of years.

These crystals can be of a single type or a wonderful mixture of amethyst, agate, calcite, citrine and rock crystal.



NO. 445

## TABLE TOP CALCITE 'ROCKET'

---

**Place of origin:** Artigas - Uruguay

**Geological period:** Cretaceous

**Age:** 120-140 million years old

**Dimensions:** H 7.5 cm x W 23 cm x D 7 cm

This gorgeous formation is a perfect tabletop size. A beautiful honey coloured calcite to the right resembles a crystal 'rocket', overgrown with black goethite and amethystine quartz on a bed of deep purple amethyst. A beautiful thin green banded agatized base complements the piece..



NO. 447

## FREESTANDING SCULPTURE WITH ICY CALCITE AND GOETHITE

---

**Place of origin:** Artigas – Uruguay

**Geological period:** Cretaceous

**Age:** 120-140 million years old

**Dimensions:** H 15 cm x W 12 cm x D 10 cm

An icy calcite lies at the centre of this small scale freestanding sculpture, covered at the base with black goethite and surrounded by amethyst.





NO. 449

## ICY LANDSCAPE FORMATION IN WHITE QUARTZ

---

**Place of origin:** Artigas - Uruguay

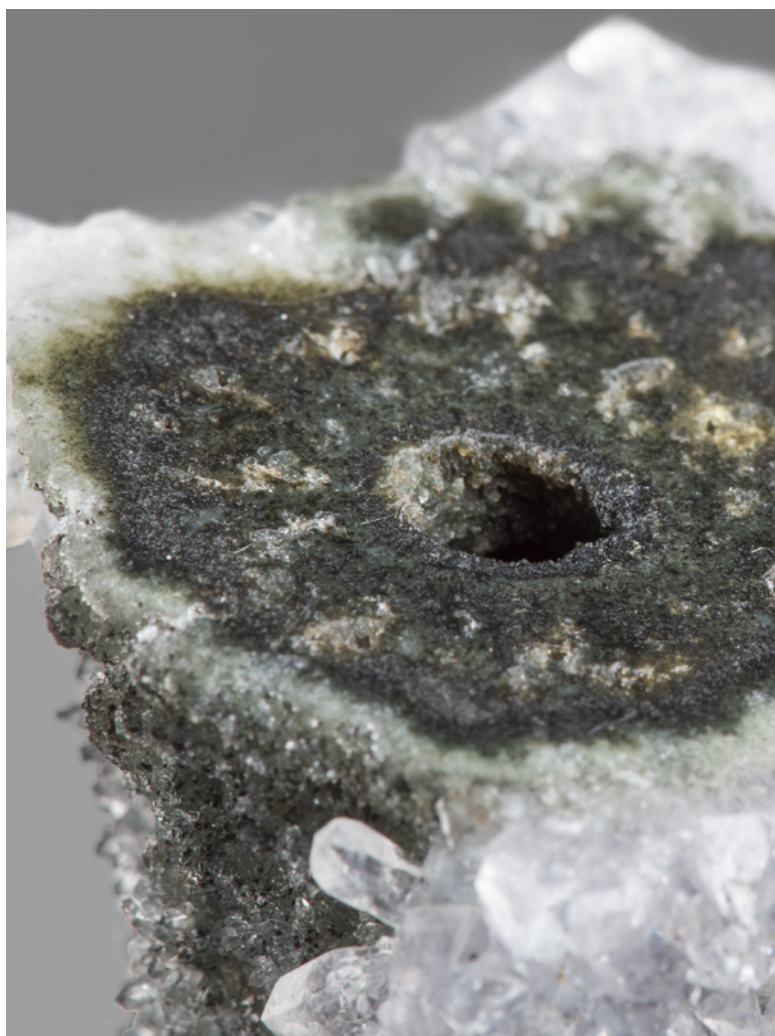
**Geological period:** Cretaceous

**Age:** 120-140 million years old

**Height (Including Stand):** 24 cm

**Dimensions:** H 18 cm x W 20.5 cm x D 10 cm

Resembling an icy blanket covering a mountainous terrain, this undulating geode section exhibits white and black quartz crystals.



NO. 450

## SMALL BLUISH QUARTZ WITH CUT STALACTITE

---

**Place of origin:** Artigas – Uruguay

**Geological period:** Cretaceous

**Age:** 120-140 million years old

**Height (Including Stand):** 12.5 cm

**Dimensions:** H 11 cm x W 9.5 cm x D 7.5 cm

A pleasing small display piece showcasing bluish druzy quartz covering a stalactite, which is cut and polished at the tip to reveal the floral interior structure.



NO. 452

## ICY CALCITE WITH AMETHYST OVERGROWTH

---

**Place of origin:** Artigas - Uruguay

**Geological period:** Cretaceous

**Age:** 120-140 million years old

**Height (Including Stand):** 14 cm

**Dimensions:** H 11 cm x W 14 cm x D 10.5 cm

This bowl shaped formation is dominated by its central icy calcite, the tip of which is overgrown with a second generation of amethystine quartz.



NO. 453

## SMALL ORANGE-TAN STALACTITE

---

**Place of origin:** Artigas – Uruguay

**Geological period:** Cretaceous

**Age:** 120-140 million years old

**Height (Including Stand):** 9.5 cm

**Dimensions:** H 8 cm x W 9 cm x D 9 cm

A small piece preserving a beautiful stalactite covered in orange-tan druzy quartz. The lower edges polished to reveal a relatively thick celadonite shell.





NO. 454

## BROWN QUARTZ STALACTITES WITH FIERY INTERIOR

---

**Place of origin:** Artigas - Uruguay

**Geological period:** Cretaceous

**Age:** 120-140 million years old

**Height (Including Stand):** 9.5 cm

**Dimensions:** H 8 cm x W 4.5 cm x D 4.5 cm

Several brownish quartz stalactites grace this small formation, the frontal one cut longitudinally to reveal a fiery interior.



NO. 460

## SMALL TOWERING GREY DRUZE STALACTITE FORMATION

---

**Place of origin:** Artigas - Uruguay

**Geological period:** Cretaceous

**Age:** 120-140 million years old

**Height (Including Stand):** 14.5 cm

**Dimensions:** H 13 cm x W 6.5 cm x D 5 cm

This small towering stalactite formation is covered in grey druze with tan-brown accents and transparent quartz overlaying green celadonite.



NO. 487

## SMALL GEODE WITH BROWN DRUZY STALACTITES

---

**Place of origin:** Artigas – Uruguay

**Geological period:** Cretaceous

**Age:** 120-140 million years old

**Height (Including Stand):** 15 cm

**Dimensions:** H 12 cm x W 20.5 cm x D 12.5 cm

This small geode reveals a large number of stalactites in various growth stages, covered in a layer of brown sparkling druze. The borders polished.



NO. 500

## MULTI GENERATIONAL CALCITE AND QUARTZ FORMATION

---

**Place of origin:** Artigas – Uruguay

**Geological period:** Cretaceous

**Age:** 120-140 million years old

**Height (Including Stand):** 26 cm

**Dimensions:** H 19 cm x W 12 cm x D 11 cm

This lilac amethyst piece preserves a small section of geode containing a rare interior formation of several calcites of different generations. One of the calcites is overlaid in amethystine quartz and goethite, whilst the other is pristine and icy in appearance.





NO. 501

## PINK DRUZY AMETHYST WITH CENTRAL CALCITE

---

**Place of origin:** Artigas – Uruguay

**Geological period:** Cretaceous

**Age:** 120-140 million years old

**Height (Including Stand):** 22 cm

**Dimensions:** H 14.5 cm x W 20 cm x D 11 cm

A dynamic sculptural piece, resembling a heart shape with a calcite formation at its upper section. The whole piece composed of lilac amethyst overlaid by a blanket of white quartz.



NO. 505

## SMALL TASTEFUL AMETHYST CLUSTER

---

**Place of origin:** Artigas – Uruguay

**Geological period:** Cretaceous

**Age:** 120-140 million years old

**Height (Including Stand):** 24 cm

**Dimensions:** H 19 cm x W 13 cm x D 9 cm

This modest cluster of deep purple amethyst has large peaked crystals. A tasteful small scale piece representing some high quality Uruguayan amethyst.



NO. 524

# AGATISED GEODE SECTION POLISHED INTO A HEART SHAPE WITH AMETHYSTINE

---

**Place of origin:** Artigas – Uruguay

**Geological period:** Cretaceous

**Age:** 120-140 million years old

**Height (Including Stand):** 16 cm

**Dimensions:** H 10.5 cm x W 10 cm x D 3 cm

This heavily agatised section of a geode has been carefully polished into a heart shape. It retains a prominent amethystine quartz lined cavity of orange-purple colour.



NO. 526

## NATURAL BASALT SECTION WITH AMETHYST EXPOSED

---

**Place of origin:** Artigas – Uruguay

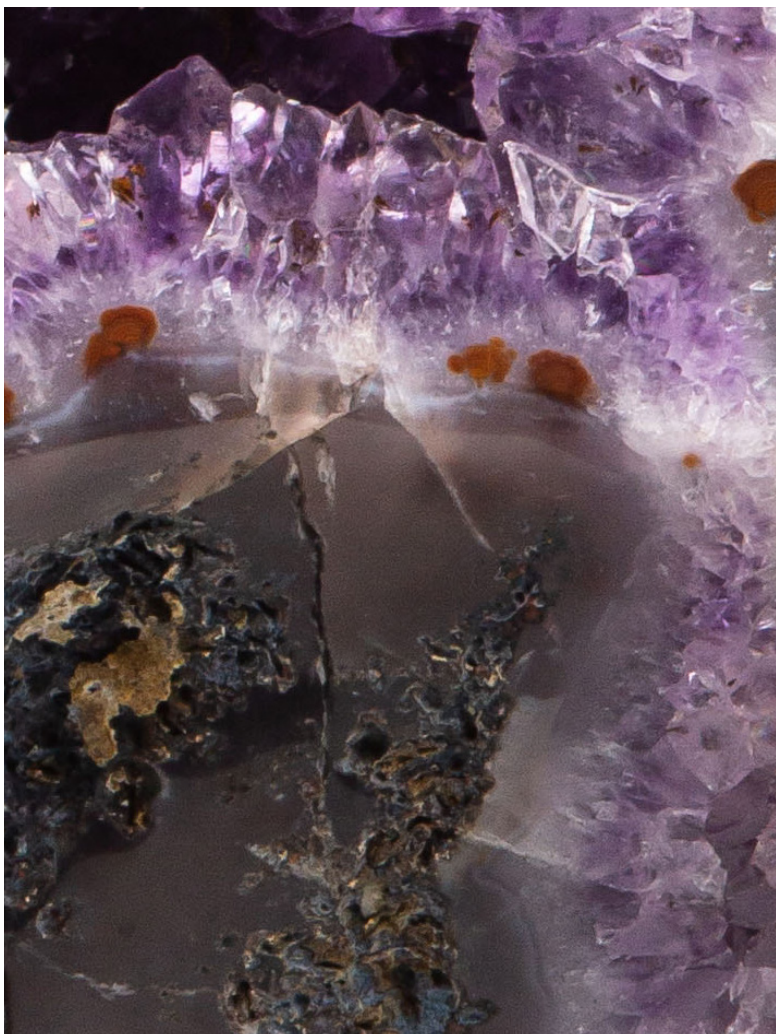
**Geological period:** Cretaceous

**Age:** 120-140 million years old

**Height (Including Stand):** 30 cm

**Dimensions:** H 22 cm x W 17 cm x D 12 cm

This fascinating section of basalt perfectly illustrates how the precious amethyst appears in the tunnels of the underground mines of Artigas. Glistening deep purple crystals jump out from the rough volcanic stone, signaling that the area is rich in geodes.





NO. 581

## HALF POLISHED AMETHYST GEODE WITH AGATE BORDER AND CALCITE FORMATION

---

**Place of origin:** Rio Grande do Sul - Brazil

**Geological period:** Cretaceous

**Age:** 120-140 million years old

**Height (Including Stand):** 56 cm

**Dimensions:** H 46 cm x W 39 cm x D 19 cm

A half polished geode with a thick agatised border. The inside covered by deep purple amethyst crystals and 2 beautiful calcite formations at the centre, one of them covered with a blanket of druze.



NO. 588

## CUT AND POLISHED HEART WITH COTTON CANDY INCLUSION

---

**Place of origin:** Artigas - Uruguay

**Geological period:** Cretaceous

**Age:** 120-140 million years old

**Height (Including Stand):** 24.5 cm

**Dimensions:** H 18 cm x W 18 cm x D 3.5 cm

An attractive geode section cut and polished into a heart shape, revealing white quartz layers with various agate layers. A cavity to the left with pink druze resembling cotton candy.



NO. 589

## SMALL FLORAL FORMATION

---

**Place of origin:** Artigas - Uruguay

**Geological period:** Cretaceous

**Age:** 120-140 million years old

**Height (Including Stand):** 13 cm

**Dimensions:** H 9 cm x W 9 cm x D 9 cm

A small formation consisting of a white quartz stalactite on a bed on lilac amethyst.



NO. 592

## STRIKING RARE QUARTZ AFTER ANHYDRITE

---

**Place of origin:** Artigas – Uruguay

**Geological period:** Cretaceous

**Age:** 120-140 million years old

**Height (Including Stand):** 15 cm

**Dimensions:** H 14 cm x W 11 cm x D 9 cm

A stunning network of quartz after anhydrite pseudomorphs. This remarkable formation formed when cream-coloured quartz formed over an earlier growth of blade-like anhydrite. The result is a beautiful stacked formation resembling matchsticks, or logs on an open fire.

NO. 595





NO. 595

## CRESCENTIC SELENITE SECTION

---

**Place of origin:** Rio Grande do Sul - Brazil

**Geological period:** Cretaceous

**Age:** 120-140 million years old

**Height (Including Stand):** 31 cm

**Dimensions:** H 24 cm x W 13 cm x D 2 cm

Another wonderful, crescentic section of colourless, transparent Selenite. Selenite is formed from crystallised gypsum and has water like clarity with a fine lustrous surface.



NO. 596

## CRESCENTIC SELENITE WITH DRUZE

---

**Place of origin:** Rio Grande do Sul - Brazil

**Geological period:** Cretaceous

**Age:** 120-140 million years old

**Height (Including Stand):** 27 cm

**Dimensions:** H 21 cm x W 9 cm x D 4 cm

Another wonderful, crescentic section of colourless, transparent Selenite with an area of tan drusy quartz to the right. Selenite is formed from crystallised gypsum and has water like clarity with a fine lustrous surface.

NO. 601



NO. 601

## GEODE SECTION WITH THICK BANDED AGATE BORDER

---

**Place of origin:** Artigas – Uruguay

**Geological period:** Cretaceous

**Age:** 120-140 million years old

**Height (Including Stand):** 25 cm

**Dimensions:** H 19 cm x W 13 cm x D 10.5 cm

A beautiful geode section showcasing the amazing contrasts of minerals found in the mines of Artigas. The exterior with a thick blue and cream banded agate border whilst the interior displays tan-purple coloured fine druzy quartz on a stalactite of organic form. The rough exterior contrasts beautifully.



NO. 602

## GEODE SECTION WITH THICK AGATE AND DRUZY QUARTZ

---

**Place of origin:** Artigas – Uruguay

**Geological period:** Cretaceous

**Age:** 120-140 million years old

**Height (Including Stand):** 27 cm

**Dimensions:** H 19 cm x W 13 cm x D 11 cm

The corresponding half of the previous geode. The exterior with an almost complete thick blue and cream banded agate border whilst the interior displays tan-purple coloured fine druzy quartz. The exterior rough.

NO. 607





NO. 607

## GREEN TINGED WHITE QUARTZ STALACTITE FORMATION

---

**Place of origin:** Artigas – Uruguay

**Geological period:** Cretaceous

**Age:** 120-140 million years old

**Height (Including Stand):** 35 cm

**Dimensions:** H 30 cm x W 34 cm x D 23 cm

This substantial formation consists of prominent white quartz crystals with a slight green tinge, laid over a bed of undulating stalactites. A small honey coloured calcite hides beneath the central stalactite.



NO. 608

## SPHERICAL GEODE WITH RARE CENTRAL RED FORMATION

---

**Place of origin:** Artigas – Uruguay  
**Geological period:** Cretaceous  
**Age:** 120-140 million years old  
**Height (Including Stand):** 11 cm  
**Dimensions:** H 9 cm x W 10.5 cm x D 9 cm

An striking small spherical geode lined with green druzy quartz with a magnificent central formation of multiple calcites. The central calcite of honey colour, partially covered in blackish goethite, and the surrounding calcites covered in an intense red druze.



NO. 609

## SMALL LILAC AMETHYST GEODE WITH CALCITE

---

**Place of origin:** Artigas – Uruguay

**Geological period:** Cretaceous

**Age:** 120-140 million years old

**Height (Including Stand):** 13 cm

**Dimensions:** H 10 cm x W 13.5 cm x D 10 cm

This small geode of lilac coloured amethystine quartz with several rhombohedral calcites at the front and red druze / blackish goethite accents.



NO. 610

## GEODE WITH ORANGE BROWN CRYSTALS AND FRONTAL CALCITE ROSETTE

---

**Place of origin:** Artigas – Uruguay

**Geological period:** Cretaceous

**Age:** 120-140 million years old

**Height (Including Stand):** 23 cm

**Dimensions:** H 18 cm x W 22 cm x D 12.5 cm

This pleasing open geode contains a bed of orange-brown amethystine quartz of moderate size with a frontal rosette of several small calcite crystals. The borders polished.





NO. 613

## AMETHYST GEODE TABLE

---

**Place of origin:** Artigas – Uruguay

**Geological period:** Cretaceous

**Age:** 120-140 million years old

**Height (Including Stand):** 63 cm

**Dimensions:** H 31 cm x W 48 cm x D 40 cm

A high quality substantial geode is shown here, the heavily agatised borders beautifully polished. The very top of the geode has been carefully removed to expose the inner intense purple, large peaked amethyst crystals. The interior visible through the glass top, supported by tasteful metal frame.



NO. 620

## ROUGH GEODE SECTION WITH CONTRASTING AMETHYST

---

**Place of origin:** Artigas - Uruguay

**Geological period:** Cretaceous

**Age:** 120-140 million years old

**Height (Including Stand):** 18 cm

**Dimensions:** H 16 cm x W 20 cm x D 16 cm

Like a treasure chest, this striking geode section shows the incredible contrast between the rough volcanic stone (basalt) in which the geodes are found, and the radiant amethystine quartz crystals they conceal.



NO. 622

## “CUP OF FLOWERS” AMETHYST AND CALCITE

---

**Place of origin:** Artigas – Uruguay

**Geological period:** Cretaceous

**Age:** 120-140 million years old

**Height (Including Stand):** 17 cm

**Dimensions:** H 14 cm x W 15.5 cm x D 15.5 cm

Resembling a cup of flowers, this formation consists of several circular calcite arrangements sat on a bed of deep purple amethyst. There is a second generation growth of amethystine quartz within and around the circular calcites, with overgrowth of blackish goethite in places.



NO. 626

## OVAL AMETHYST GEODE

---

**Place of origin:** Artigas - Uruguay

**Geological period:** Cretaceous

**Age:** 120-140 million years old

**Dimensions:** H 11 cm x W 13 cm x D 12 cm

A gorgeous small oval amethyst geode with an eye-shaped aesthetic opening revealing the high quality amethyst interior, creating a wonderful contrast with the rough basalt exterior. The edges polished to reveal the white quartz and blue agate layers.





NO. 628

## SMALL AMETHYST CLUSTER

---

**Place of origin:** Artigas - Uruguay

**Geological period:** Cretaceous

**Age:** 120-140 million years old

**Dimensions:** H 16 cm x W 12 cm x D 8.5 cm

A small amethyst cluster with interesting sprinkling of creamy calcite crystals. Polished at the edges.



*Carol Tresor*

Tel: +44 7507 420387

Email: [info@caroltresor.com](mailto:info@caroltresor.com)

[www.caroltresor.com](http://www.caroltresor.com)