



Carol Tresor

NATURAL TREASURES III



INTRODUCTION

We are pleased to present a high quality collection of Uruguayan crystals. All the pieces in this catalogue were legally and ethically sourced directly from the prestigious mines of Uruguay, South America. Uruguayan amethyst is internationally recognised as being the finest and most aesthetic amethyst in the world, due to its intense deep purple colouration, the large size of its peaked crystals, and its durability. These crystals were formed over 120-140 million years during the Cretaceous period, and as all of our pieces are formed naturally, they are completely unique and unrepeatable natural wonders.

Amethyst crystals are found inside vugs (hollow cavities) or geodes (rounded or spheroidal-shaped vugs) in volcanic areas or sedimentary rocks. In some cases, mineral-laden water filters through these hollow voids over millions of years, creating a crystal lining.

Geodes containing amethyst are often formed in Basalt (volcanic rock) and can be found in Uruguay and Brazil. The enchantment of finding a geode is discovering the hidden crystals that have formed inside over millions of years.

These crystals can be of a single type or a wonderful mixture of amethyst, agate, calcite, citrine and rock crystal.

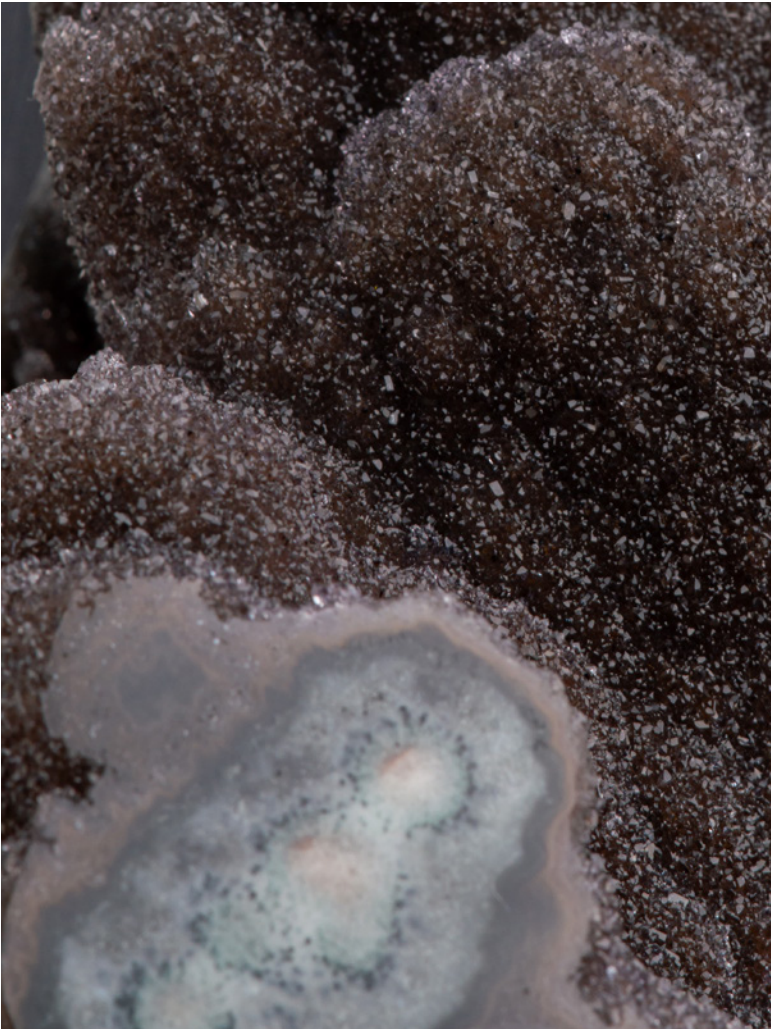


NO. 439

V-SHAPED FORMATION CRADLING CALCITE

Place of origin: Artigas – Uruguay
Geological period: Cretaceous
Age: 120-140 million years old
Dimensions: H 20 cm x W 16 cm x D 17 cm

This striking V-shaped freestanding formation displays evenly sized fine quality amethyst crystals to the interior. At the heart of the piece lies an icy calcite overlaid in places with black goethite. The borders polished and the exterior with rough basalt.



NO. 444

SMALL TAN AMETHYSTINE QUARTZ SCULPTURE

Place of origin: Artigas – Uruguay

Geological period: Cretaceous

Age: 120-140 million years old

Height (Including Stand): 14 cm

Dimensions: H 11.5 cm x W 23 cm x D 10 cm

This beautiful tabletop sculpture of tan coloured amethystine quartz has polished borders revealing the typical Uruguayan celadonite “shell” that lines the parent geode.



NO. 446

TABLE TOP PIECE WITH RARE MINERAL FORMATIONS AND CALCITE "ROCKET"

Place of origin: Artigas - Uruguay

Geological period: Cretaceous

Age: 120-140 million years old

Dimensions: H 12 cm x W 20.5 cm x D 6.5 cm

A remarkable tabletop piece, showing high quality amethyst, with prominent faceted gold-coloured calcite, coated at the bottom with amethystine quartz and black goethite. The whole resembling a rocket with trailing smoke.



NO. 448

INTENSE HEART SHAPED GEODE

Place of origin: Artigas – Uruguay

Geological period: Cretaceous

Age: 120-140 million years old

Height (Including Stand): 21 cm

Dimensions: H 15.5 cm x W 15 cm x D 15 cm

An almost complete small sized geode showcasing the finest amethyst of deep purple colour. A prominent stalactite at the top with polished borders revealing multiple mineral layers.



NO. 451

GEODE SECTION WITH CENTRAL CALCITE AND EPITAXIAL GOETHITE

Place of origin: Artigas - Uruguay

Geological period: Cretaceous

Age: 120-140 million years old

Dimensions: H 14 cm x W 20 cm x D 17.5 cm

Preserving the bowl shape of its parent geode, this piece has a prominent icy calcite with multiple facets. Along two of the facets distinct zones of goethite have grown. The reason why minerals from different species sometimes align is poorly understood but relatively rare.



NO. 455

GREEN ORGANIC FORMATION

Place of origin: Artigas – Uruguay

Geological period: Cretaceous

Age: 120-140 million years old

Height (Including Stand): 12.5 cm

Dimensions: H 12.5 cm x W 9 cm x D 8.5 cm

A wonderful display piece showing a prominent thick stalactite at the centre, covered with glass-like green-brown druzy quartz. The lower border polished to reveal a wonderful sea green celadonite “shell” belonging to the original geode.



NO. 456

SMALL BLUE-GREY ICICLE FORMATION

Place of origin: Artigas – Uruguay

Geological period: Cretaceous

Age: 120-140 million years old

Height (Including Stand): 13.5 cm

Dimensions: H 11 cm x W 10.5 cm x D 8.5 cm

Wonderful small scale sculpture resembling several icicles in blue-grey druzy quartz. Several tastefully cut to reveal the interior structure. The lower borders polished.

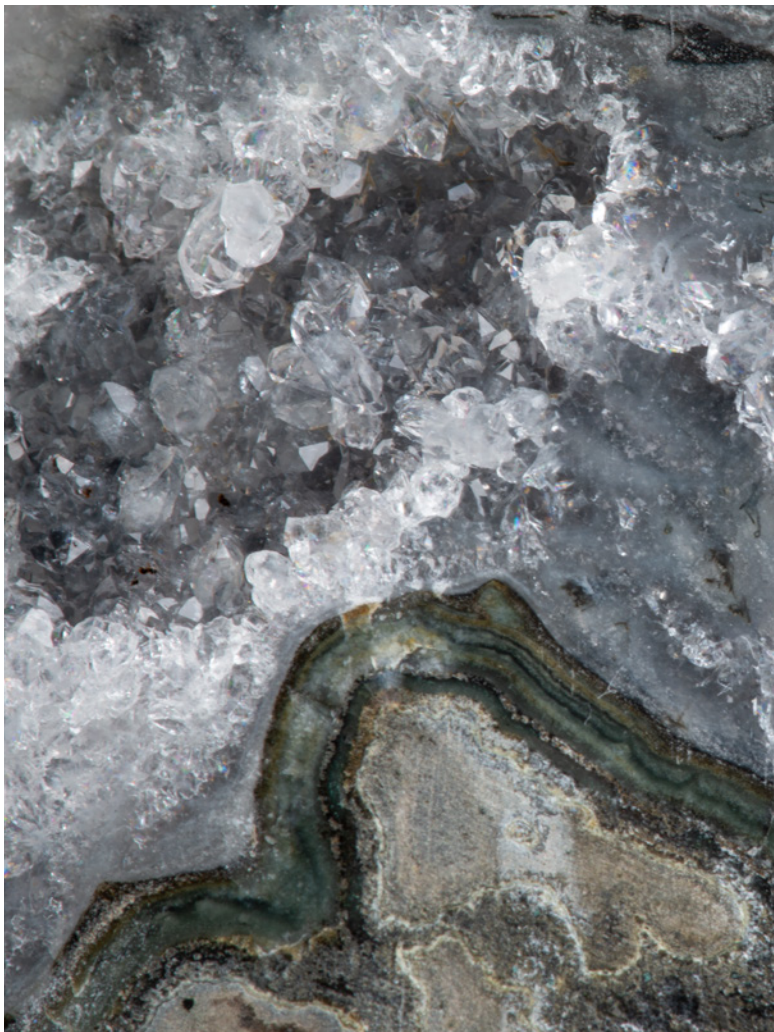


NO. 458

SMALL ORANGE TINTED DRUZY QUARTZ FORMATION

Place of origin: Artigas - Uruguay
Geological period: Cretaceous
Age: 120-140 million years old
Height (Including Stand): 12.5 cm
Dimensions: H 9 cm x W 13 cm x D 10 cm

Several small stalactites adorn this piece, covered in light orange druzy quartz.



NO. 459

GREY DRUZE WITH GREEN JASPER AND WHITE QUARTZ

Place of origin: Artigas – Uruguay

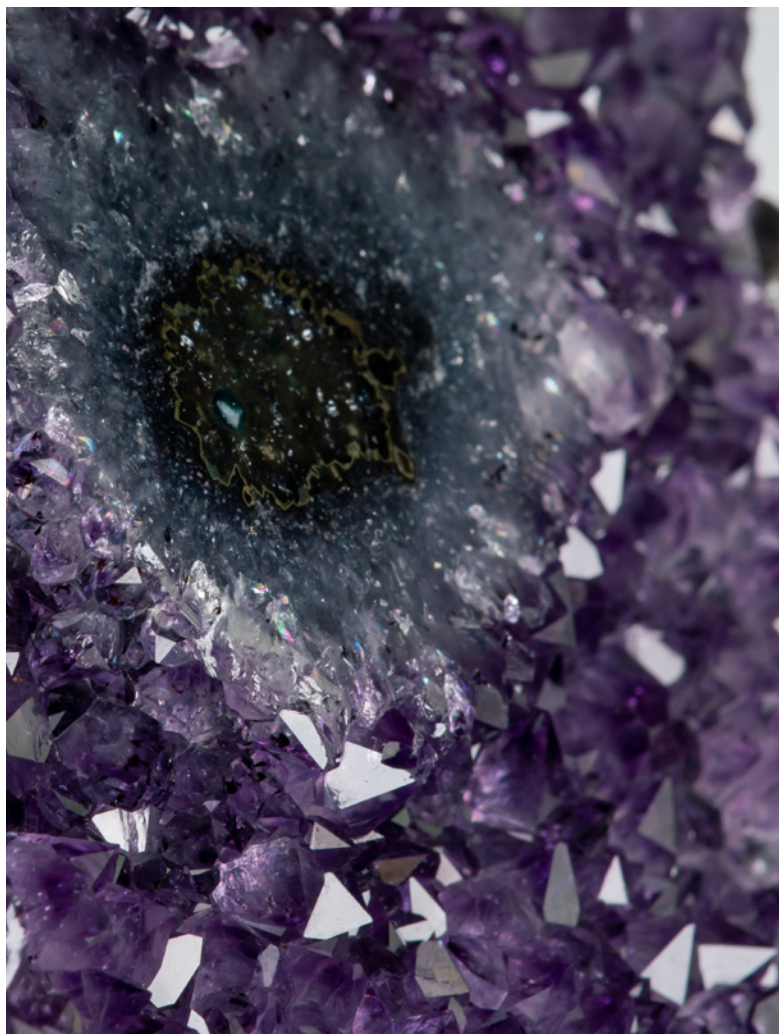
Geological period: Cretaceous

Age: 120-140 million years old

Height (Including Stand): 13 cm

Dimensions: H 11.5cm x W 9cm x D 8cm

Small unusual mineral formation, this piece is composed of light and dark grey amethyst druze, green celadonite, with beautiful multiple stalactite formations and a blanket of white quartz on top.



NO. 461

SMALL HEART-SHAPED AMETHYST FORMATION

Place of origin: Artigas – Uruguay

Geological period: Cretaceous

Age: 120-140 million years old

Height (Including Stand): 22.5 cm

Dimensions: H 17.5 cm x W 16 cm x D 8 cm

This small heart-shaped amethyst formation has a central “eye”, a cut stactite revealing the dark blue-green interior structure.



NO. 464

BEAUTIFUL AGATE AND AMETHYST SLICE

Place of origin: Artigas – Uruguay

Geological period: Cretaceous

Age: 120-140 million years old

Height (Including Stand): 47 cm

Dimensions: H 33.5 cm x W 25 cm x D 6 cm

This gorgeous slice perfectly displays the genesis of a geode. From outside to inwards, the rough basalt, celadonite shell, agate later and finally amethystine quartz are beautifully shown in cross section.



NO. 465

BEAUTIFUL AGATE AND AMETHYST SLICE

Place of origin: Artigas – Uruguay

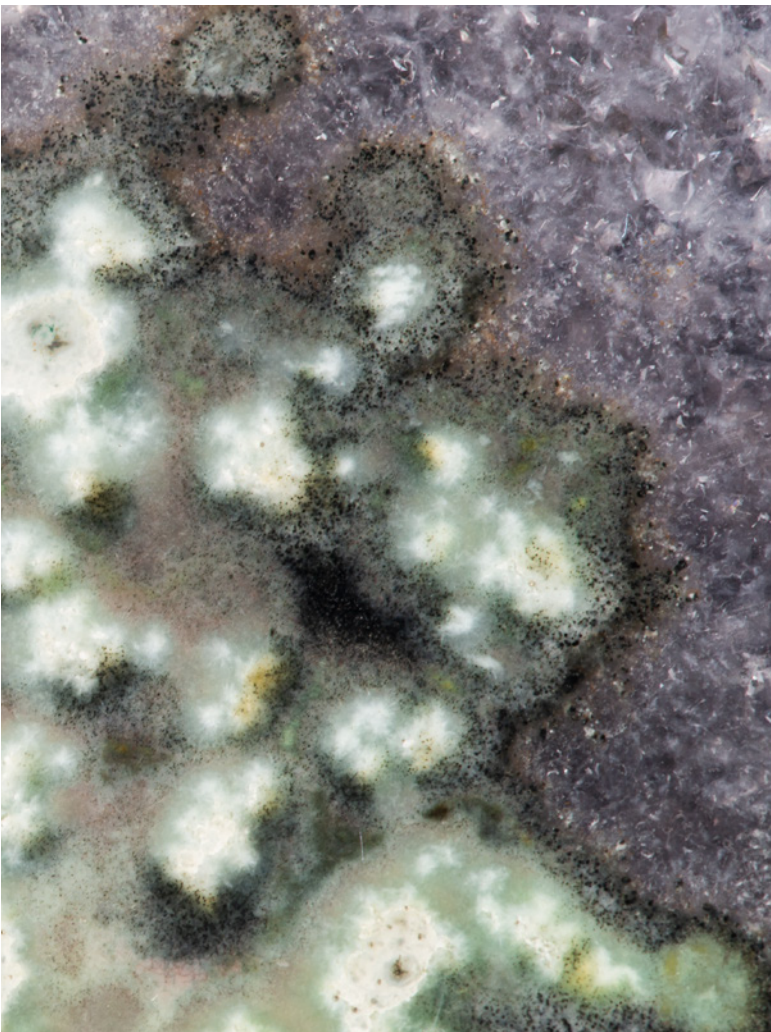
Geological period: Cretaceous

Age: 120-140 million years old

Height (Including Stand): 47.5 cm

Dimensions: H 35.5 cm x W 25 cm x D 6cm

Another part of a matching pair. This gorgeous slice perfectly displays the genesis of a geode. From outside to inwards, the rough basalt, celadonite shell, agate later and finally amethystine quartz are beautifully shown in cross section.



NO. 466

PSYCHEDELIC GEODE SLICE

Place of origin: Artigas – Uruguay

Geological period: Cretaceous

Age: 120-140 million years old

Height (Including Stand): 38 cm

Dimensions: H 27.5 cm x W 24.5 cm x D 4 cm

A gorgeous geode slice showing a wonderful dreamy mix of colours and shapes. Cut from the edge of a geode and polished, the various formations shown here are due to different temperatures and minerals, as well as various cut stalactites.



NO. 468

DREAMY GEODE END CUT

Place of origin: Artigas – Uruguay

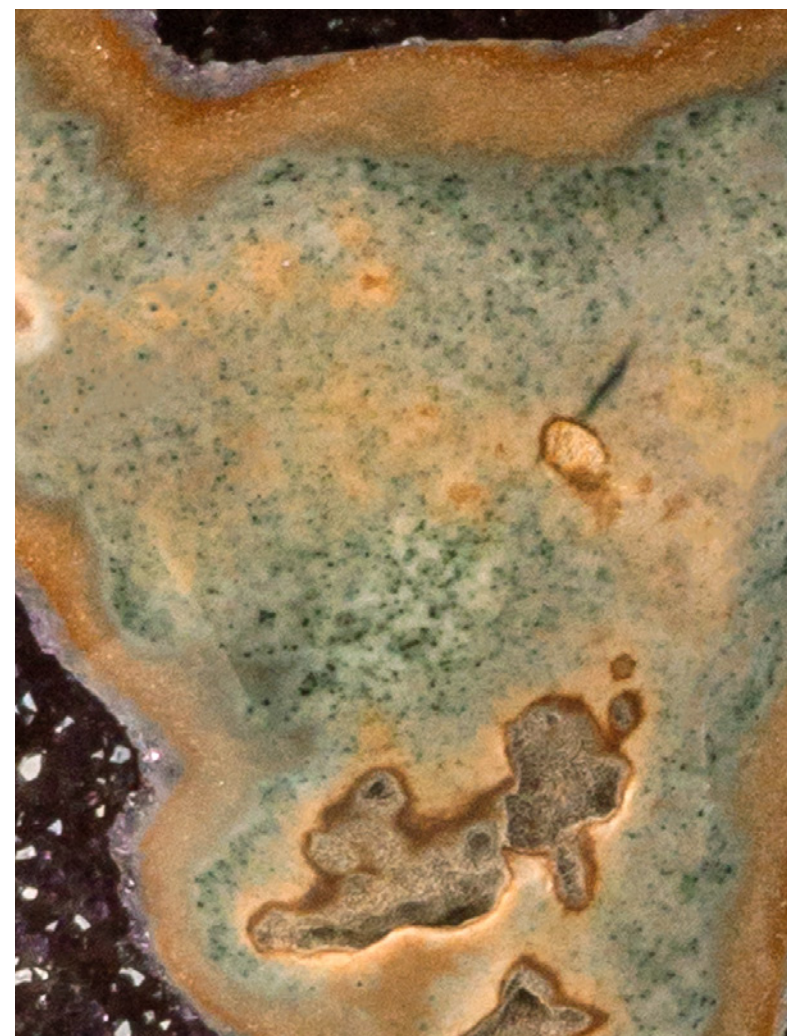
Geological period: Cretaceous

Age: 120-140 million years old

Height (Including Stand): 35 cm

Dimensions: H 26 cm x W 22 cm x D 4 cm

This beautiful end cut of a geode resembles a piece of Murano glass. Greenish colours, punctuated by cut stalactite “eyes” blur into orange areas and create a wonderful aesthetic. A polished celadonite shell adorns the exterior.



NO. 469

AGATISED MULTI-WINDOWED GEODE

Place of origin: Artigas – Uruguay

Geological period: Cretaceous

Age: 120-140 million years old

Height (Including Stand): 35.5 cm

Dimensions: H 24.5 cm x W 16 cm x D 11 cm

This heavily agatiised medium sized geode contains 6 “windows” from which the beautiful amethyst interior can be appreciated. A spectacular display piece.



NO. 470

GEODE SECTION WITH RARE AMETHYST FORMATION AND GREEN SHELL

Place of origin: Artigas – Uruguay

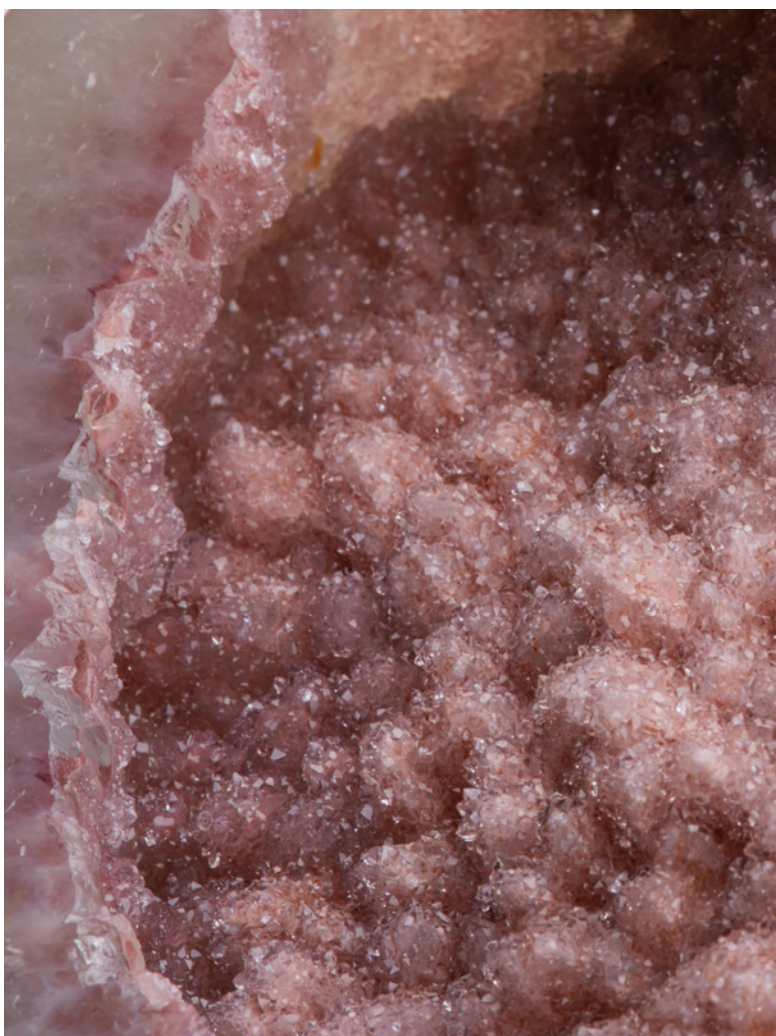
Geological period: Cretaceous

Age: 120-140 million years old

Height (Including Stand): 38 cm

Dimensions: H 34.5 cm x W 15 cm x D 12 cm

This striking section cut from the centre of a geode, contains an unusual formation of calcite with a blanket of amethyst crystals. The borders are polished to reveal the beautiful celadonite shell.



NO. 471

HEART-SHAPED PINK QUARTZ FORMATION

Place of origin: Artigas – Uruguay

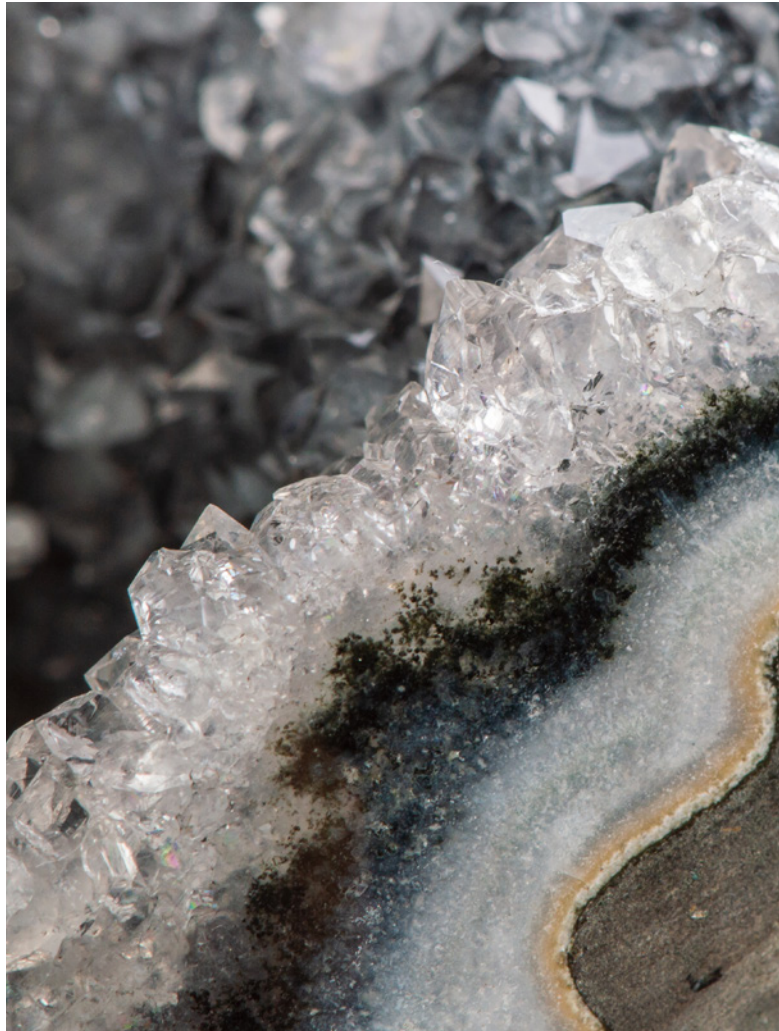
Geological period: Cretaceous

Age: 120-140 million years old

Height (Including Stand): 31 cm

Dimensions: H 24 cm x W 19.5 cm x D 7 cm

This heart shaped formation has a beautiful contrast of a polished white quartz exterior with an interior laden with pink druzy stalactites.



NO. 472

STEELY GEODE WITH CALCITES

Place of origin: Artigas – Uruguay

Geological period: Cretaceous

Age: 120-140 million years old

Height (Including Stand): 24 cm

Dimensions: H 18 cm x W 28 cm x D 15 cm

This open geode is lined with steel coloured quartz and embellished with a large central calite covered with amethystine quartz. Several other calcites to the side.



NO. 473

AMETHYST SECTION WITH CUT STALACTITE EYES

Place of origin: Artigas – Uruguay

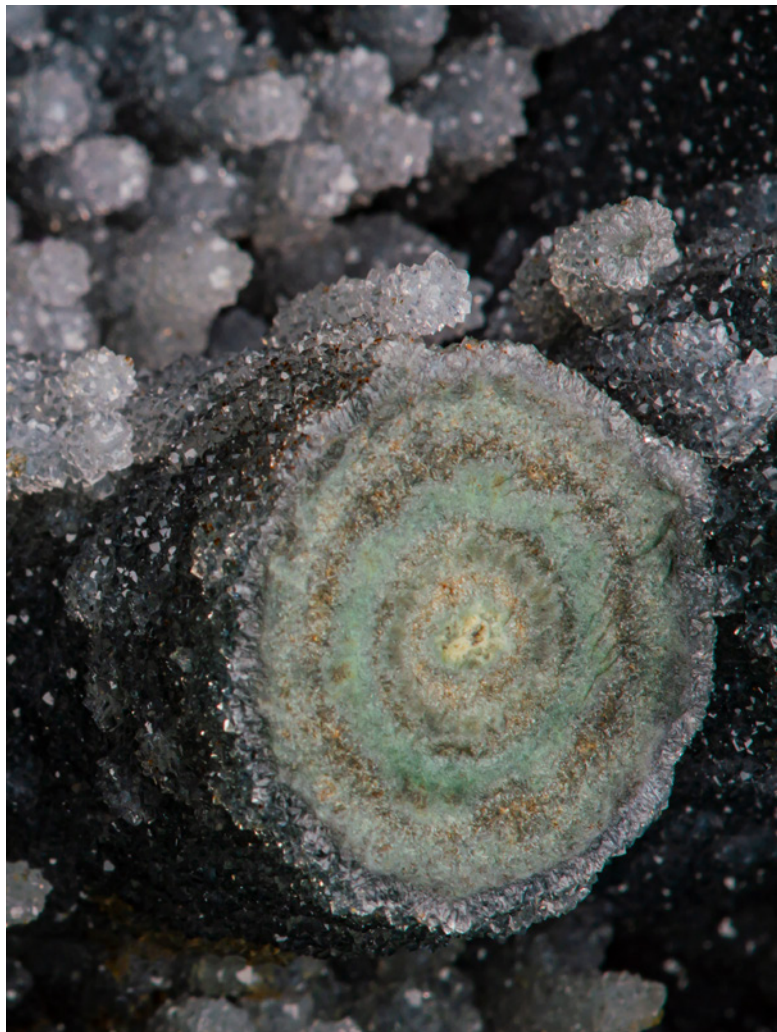
Geological period: Cretaceous

Age: 120-140 million years old

Height (Including Stand): 36.5 cm

Dimensions: H 26 cm x W 28 cm x D 20 cm

A beautiful oval shaped amethyst section with deep purple amethyst and two cut amethyst eyes near the centre. A small calcite to the right completes the composition.



NO. 479

EGG SHAPED POLISHED ORGANIC GEODE SECTION

Place of origin: Artigas – Uruguay

Geological period: Cretaceous

Age: 120-140 million years old

Height (Including Stand): 39.5 cm

Dimensions: H 29 cm x W 18 cm x D 11 cm

This gorgeous geode section is egg-shaped in form, with a beautiful field of grass like green druzy stalactites and several larger cut stalactite “eyes”, revealing their interior structure of concentric circles.



NO. 480

MOSTLY COMPLETE GEODE WITH BELLOWING DRUZE COVERED CALCITE

Place of origin: Artigas – Uruguay

Geological period: Cretaceous

Age: 120-140 million years old

Height (Including Stand): 18 cm

Dimensions: H 12 cm x W 25 cm x D 18 cm

A wonderful largely complete geode lined with steel coloured druzy quartz and a large central calcite covered in white druze, resembling a bird within a nest. To the side the flame like underlying calcite can be seen.



NO. 481

CORAL LIKE ROUND GEODE WITH POLISHED BORDERS

Place of origin: Artigas - Uruguay

Geological period: Cretaceous

Age: 120-140 million years old

Height (Including Stand): 31 cm

Dimensions: H 24 cm x W 37 cm x D 22 cm

Beautiful green-grey coral-like stalactites emerge from the interior lining of this round geode. The borders polished to reveal the celdonite shell with the exterior basalt still visible.



NO. 482

DEEP PURPLE AMETHYST WITH LARGE CALCITE AND POLISHED AGATE

Place of origin: Artigas – Uruguay

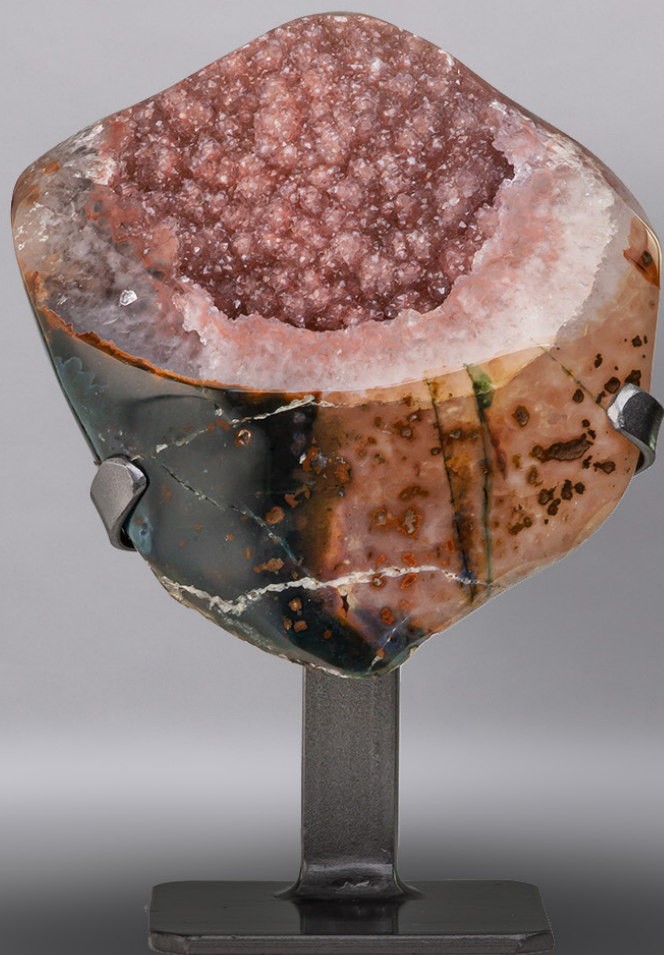
Geological period: Cretaceous

Age: 120-140 million years old

Height (Including Stand): 29.5 cm

Dimensions: H 18,5 cm x W 35 cm x D 15 cm

Stunning geode cluster of an intense deep purple colour amethyst crystals. A big calcite stand-out from the crystals, covered with a blanket of black hematite.



NO. 483

SMALL CUT AGATISED GEODE WITH COTTON CANDY INTERIOR

Place of origin: Artigas - Uruguay

Geological period: Cretaceous

Age: 120-140 million years old

Height (Including Stand): 24 cm

Dimensions: H 17.5 cm x W 17 cm x D 8 cm

A beautiful small geode with thick agate borders and interior window revealing a gorgeous pink druzy coating over nascent stalactites, resembling cotton candy in appearance.



NO. 484

TRIANGULAR GEODE SECTION WITH PERCHED CALCITE

Place of origin: Artigas - Uruguay

Geological period: Cretaceous

Age: 120-140 million years old

Height (Including Stand): 45 cm

Dimensions: H 34 cm x W 25 cm x D 13 cm

A beautiful triangular geode section in lilac amethyst with a gold coloured calcite perched on a bed of red druzy quartz.



NO. 486

CRESCENT SHAPED SECTION WITH INTENSE PURPLE AMETHYST CORE

Place of origin: Artigas - Uruguay

Geological period: Cretaceous

Age: 120-140 million years old

Height (Including Stand): 26.5 cm

Dimensions: H 21.5 cm x W 10 cm x D 8 cm

This crescentic medium sized section has a wonderful thick white quartz border with an intense purple amethyst core.



NO. 489

BLURRY PURPLE ON RHOMBOIDAL QUARTZ

Place of origin: Artigas – Uruguay

Geological period: Cretaceous

Age: 120-140 million years old

Height (Including Stand): 34.5 cm

Dimensions: H 27.5 cm x W 20 cm x D 14 cm

A beautiful blur of purple runs through this medley of rhomboidal quartz crystals. All preserved on a thin celadonite shell, left in its rough condition.



NO. 490

SMALL FORMATION OF CLEAR QUARTZ ON THICK AGATE

Place of origin: Artigas - Uruguay

Geological period: Cretaceous

Age: 120-140 million years old

Height (Including Stand): 15 cm

Dimensions: H 11.5 cm x W 19.5 cm x D 12.5 cm

A small formation of multiple stalactites, covered in clear druzy quartz and sat on a thick bed of brown agate.



NO. 493

OVAL SECTION WITH TAN COLOURED DRUZE

Place of origin: Artigas - Uruguay

Geological period: Cretaceous

Age: 120-140 million years old

Height (Including Stand): 28.5 cm

Dimensions: H 20 cm x W 17 cm x D 11 cm

A beautiful cloud like formation with nascent stalactites covered in tan coloured druzy quartz with polished edges.



NO. 590

RARE BOAT SHAPED QUARTZ AFTER ANHYDRITE PSEUDOMORPH

Place of origin: Rio Grande do Sul - Brazil

Geological period: Cretaceous

Age: 120-140 million years old

Height (Including Stand): 17 cm

Dimensions: H 14 cm x W 31 cm x D 15 cm

A beautiful formation of unusual quartz pseudomorphs after anhydrite. The quartz crystals have formed over anhydrite crystals, which subsequently dissolved, leaving tan coloured quartz crystals with hollow cores. The whole resembling a boat with quartz "sails".



NO. 593

FINGER-LIKE QUARTZ AFTER ANHYDRITE PSEUDOMORPH

Place of origin: Rio Grande do Sul - Brazil

Geological period: Cretaceous

Age: 120-140 million years old

Height (Including Stand): 13.5 cm

Dimensions: H 10 cm x W 13 cm x D 11 cm

Another formation of quartz pseudomorphs after anhydrite. The beautiful medley of quartz crystals formed over anhydrite crystals, which subsequently dissolved, leaving tan coloured quartz crystals with hollow cores. A beautiful arrangement of finger like quartz.



NO. 599

CROSS-SECTIONAL GEODE SLICE WITH PINK DRUZY QUARTZ

Place of origin: Artigas – Uruguay

Geological period: Cretaceous

Age: 120-140 million years old

Height (Including Stand): 48.5 cm

Dimensions: H 37 cm x W 33 cm x D 4 cm

A beautiful heavily agatised cross-sectional slice of a geode with gorgeous pink druze covered stalactites. The concentric bands on the exterior meet the rough basalt shell.



NO. 600

CROSS-SECTIONAL GEODE SLICE WITH PINK DRUZY QUARTZ

Place of origin: Artigas – Uruguay

Geological period: Cretaceous

Age: 120-140 million years old

Height (Including Stand): 50 cm

Dimensions: H 36 cm x W 32 cm x D 3.5 cm

Another beautiful heavily agatised cross-sectional slice of a geode with gorgeous pink druze covered stalactites. The concentric bands on the exterior meet the rough basalt shell.



Carol Tresor

Tel: +44 7507 420387

Email: info@caroltresor.com

www.caroltresor.com